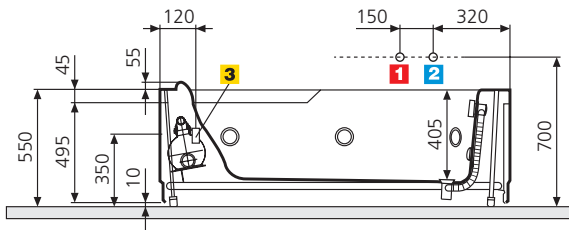


Dati tecnici

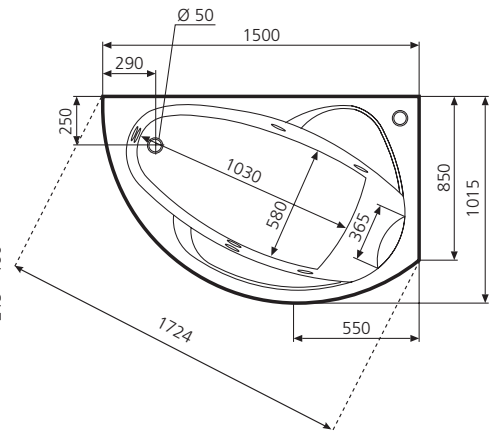
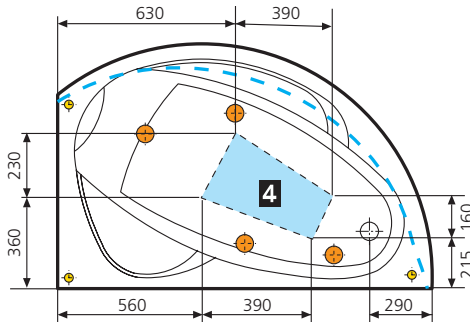
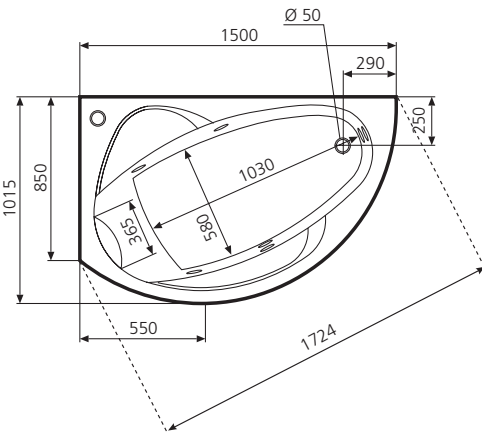
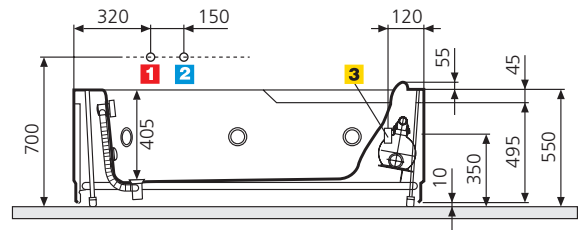
Samoa new

SAMOA 150 x 85 - capacità 140 litri

con schienale a sinistra

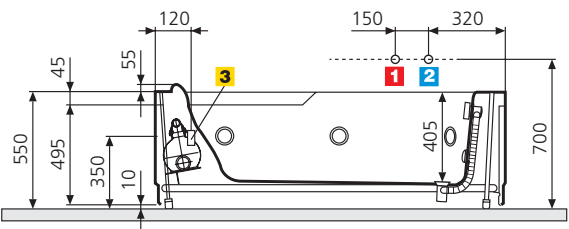


con schienale a destra

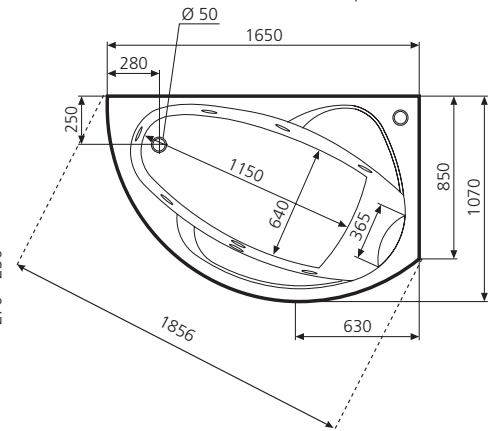
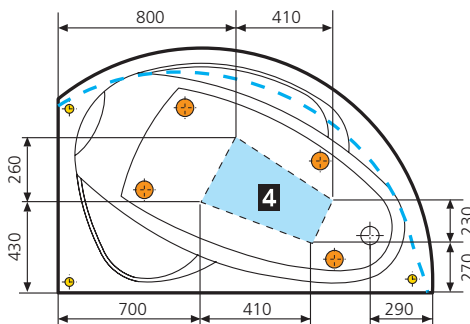
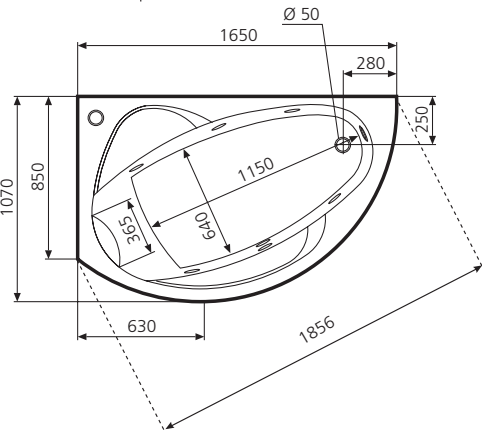
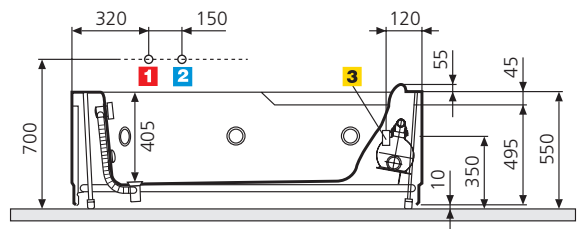


SAMOA 165 x 85 - capacità 180 litri

con schienale a sinistra



con schienale a destra



Area disponibile per lo scarico

Area consigliata



Installare a monte dell'apparecchio un interruttore differenziale da 30mA provvisto di interruttore onnipolare con apertura minima dei contatti ≥ 3 mm.

Caratteristiche idrauliche

- 6 bocchette whirlpool
- Allaccio sifone con raccordo 1 1/2"

Caratteristiche elettriche

- Tensione 230 V
- Frequenza 50 Hz
- Potenza massima assorbita: whirlpool 600 W